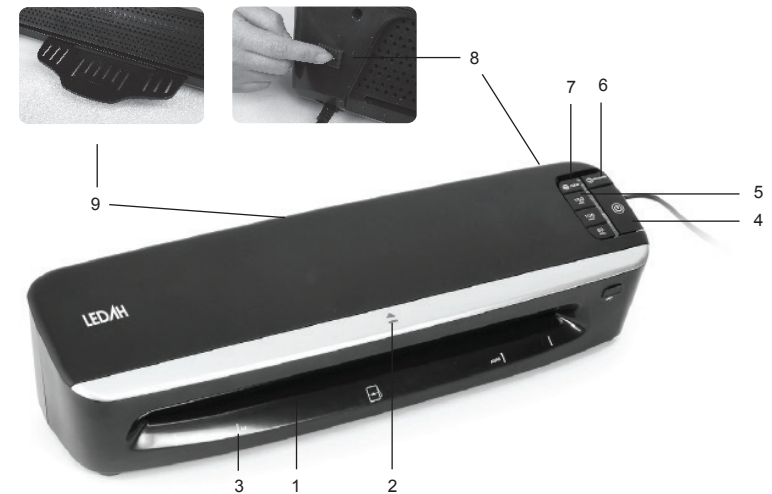


# LEDAH

## LEDAH 100 A3 LAMINATOR

Read all instructions before use.



1. ENTRY
2. READY LIGHT
3. LAMINATION BORDER MARKS
4. POWER BUTTON
5. POUCH THICKNESS BUTTONS
6. REVERSE BUTTON
7. COLD BUTTON – COLD LAMINATION
8. MAIN SWITCH (O/I)
9. POUCH EXIT TRAY

**Hamelin Brands**

Ph: 1300 655 668

Email: [customersupport.au@hamelinbrands.com](mailto:customersupport.au@hamelinbrands.com)

Address: 17 Interchange Drive Eastern Creek 2766

# LEDAH

## LEDAH 100 A3 LAMINATOR



### General Safeguards

- Place your machine on a stable surface.
- DO NOT use the laminator if its power cord is damaged.
- Ensure no lamination runs with metal objects like staples, paper clips.
- DO NOT attempt to open or otherwise repair the machine.
- Keep the machine including its power cord away from heat and water sources.
- Turn off the machine after each use.
- Unplug the machine when not in use for an extended period.
- DO NOT laminate an empty pouch.
- Use pouches required for the appropriate pouch setting.
- Follow the instructions and specifications shown on the machine as well.
- Leave the **Pouch exit tray** clear of any objects.
- This appliance is not intended for use by persons (including children) with reduced physical, sensory or mental capabilities, or lack of experience and knowledge, unless they have been given supervision or instruction concerning use of the appliance by a person responsible for their safety.
- Children should be supervised to ensure that they do not play with the appliance.

### Specifications/Technical data (subject to change without prior notice)

Model #	Ledah 100 A3
Pouch Capacity	80 - 125mic per pouch
Warm up time	1 minute
Temperature	Hot & Cold Settings
Laminating Speed	480mm/min
Voltage	220-240V, 50Hz
Entry Width	320mm
Unit Size	470 x 146 x 123mm
Unit Weight	3.3kg

### Long life tips

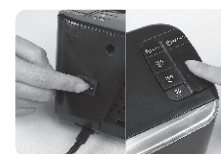
- Run a plain paper board (about 180gsm-250gsm) through the machine to clean rollers.
- Leave the machine stand-by for 30 minutes, and it will shut off by itself.
- Let the machine fully cool down before you put it away.



### POUCH JAM ALERT

- Follow the right document/pouch insert direction.
- Only run a lamination job within the **Border mark**.
- Only run a lamination job when **READY light** turns green.
- Only run a lamination job at the correct **Pouch button** setting.
- Check there is enough clear space (min. 500mm, 20") behind the machine.

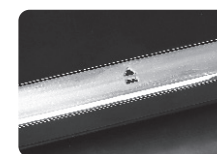
### HOT LAMINATING OPERATION:



(Fig. 1)  
Turn on the **Power switch**, and press the **On/Off button**.



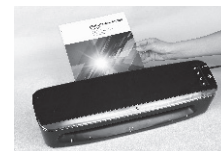
(Fig. 2)  
Press the right **Pouch button**, corresponding to the pouch used. For cold laminating, press the **Cold button**.



(Fig. 3)  
When **READY light** turns green, and you hear the beeping sound, the machine is ready to start laminating.



(Fig. 4)  
Place the pouch (proper document inside) into the **Pouch entry**, sealed edge first.



(Fig. 5)  
Remove finished lamination from **Pouch exit tray** at the back of the machine.



(Fig. 6)  
In case of pouch jam, press the **REV. button** and you hear the beeping sound. Pull out the jammed lamination from the **Pouch entry**.



(Fig. 7)  
**Turning off the machine** - Press the **On/Off button**, and turn off the **Power switch**.