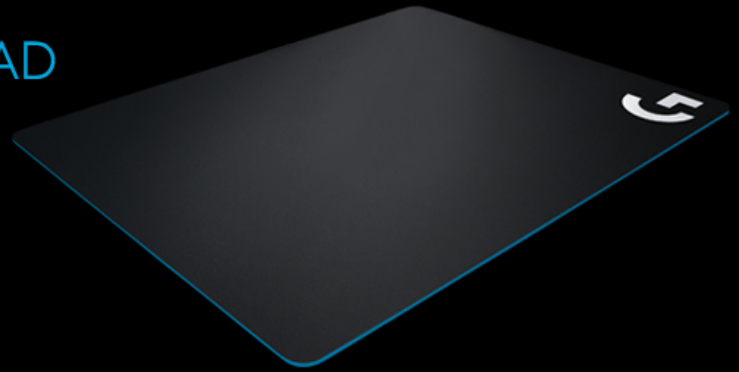


G440 HARD GAMING MOUSE PAD



GAME WITH PASSION.
WIN WITH SCIENCE.



Logitech® G440 Hard Gaming Mouse Pad

Logitech® G440 Hard Gaming Mouse Pad features a low-friction, hard polymer surface ideal for high-DPI gaming, improving mouse control and precise cursor placement. Consistent surface texture improves sensor performance, especially when used with Logitech G gaming sensors. And the multi-layer construction with a rubber base and hard polymer core give G440 a stable foundation for precise in-game mouse manoeuvres.

Key features

Logitech® G440 Hard Gaming Mouse Pad.
High speed meets high precision.

- Low surface friction
- Consistent tracking surface
- Stable, rigid base

Low-friction surface

Low surface friction. Low surface friction provides minimal resistance to the mouse feet when making the small movements common to high-DPI gaming, requiring less force to start or stop a movement and minimising the chance of overshooting cursor placement.

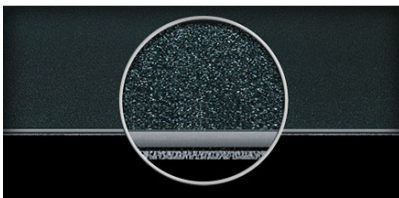
Compatibility

What's in the box

- Mouse pad
- User documentation
- 3-year manufacturer's guarantee and full product support

Package specifications

Weight:	0.370 kg
Width:	32.00 cm
Height/depth:	cm
Length:	34.00 cm



Consistent surface texture

Consistent surface texture. The consistent surface texture provides the sensor the optimal imagery for translating mouse movement into cursor movement, an improvement over often inconsistent or dirty

Optimal Logitech G sensor surface

Matched to Logitech G sensors. Using a surface texture closest to the optimal testing environment, G440 gives gamers access to the fullest Logitech G mouse sensor accuracy and precision.

Thin, rubber base

Stable rubber base. High-DPI gamers make very subtle hand movements and even the slightest shift in the gaming surface can interfere with precise cursor control. The rubber surface ensures a stable base for

table or desk surfaces.

mouse movement.

Comparison Chart

	G240	G440	G640	G640 CLOUD9	G640 TSM
					
Consistent Surface Texture	Yes	Yes	Yes	Yes	Yes
Matched to Logitech G Sensors	Yes	Yes	Yes	Yes	Yes
Stable Rubber Base	Yes	Yes	Yes	Yes	Yes
Surface Friction	Moderate	Low	Moderate	Moderate	Moderate
Construction	Cloth	Hard	Cloth	Cloth	Cloth
Surface Material	Heat-treated Textile	Plastic	Heat-treated Textile	Heat-treated Textile	Heat-treated Textile
Thickness	1mm	3mm	3mm	3mm	3mm
Size	340x280mm	340x280mm	460x400mm	460x400mm	460x400mm

Other information

Technical specifications

Width: 340 mm

| Depth: 280 mm

| Thickness: 3 mm

| Weight: 226 g (approximate)